

# LinkCom III S

The ideal solution for **connection** of mfp laser printers to **IBM** systems

LinkCom III S is a multifunction and versatile protocol converter designed to support both IBM host printing and any PC/LAN printing on laser printers including laser printers with MFP capabilities. LinkCom III S features a two port switch for connection to the network and for connection to the printer. IBM host print data will be translated in the LinkCom III S and converted into PCL or PostScript and sent to the printer using TCP/IP. PC/LAN printing is directed transparently via the switch of LinkCom III S and sent unchanged to the printer. Any MFP capability of the printer e.g. remote configuration, scanning or fax option is maintained and fully operational.

LinkCom III S is designed to work efficiently within the mixed Host/LAN environment and supports TCP/IP and SNA sessions directly from the IBM host systems as well as TCP/IP sessions from the LAN. The LinkCom III S will convert IBM IPDS, ICDS and SCS/DCA to the industry standard PCL5/5e or PostScript language used by most laser printers today.

LinkCom III S makes connection of printers to complex LAN environments easier than ever, as the printer is simply connected via the LinkCom III S to the LAN. By a simple configuration both the IBM systems and standard LAN/PC environment can make full use of all features on any B/W and Colour printer, including finishing options.

LinkCom III S offers easy Plug 'n Print installation for the AS/400 environment using the TN5250e. TN3270e allows mainframe users to migrate SCS/DCA data stream to LAN in an easy manner.

LinkCom III S also provides elegant features such as status reporting directly to the person responsible for the printer. Future enhancements and updates are easily performed through downloads from the support pages on [www.mpitech.com](http://www.mpitech.com)

- IBM host printing to any laser printer including mfp printers
- Full IPDS support including colour printing
- Converts both AFP/IPDS and SCS/DCA to laser printers
- Output to the printer using TCP/IP
- Supports both TCP/IP and SNA sessions from the IBM host
- TN5250e/TN3270e enabled
- Printer management using MPI Tech PrintGuide or web browser
- Password protected set-up

## Network Attachment

Ethernet

- 100BASE-TX at 100 Mbps
- 10BASE-T at 10 Mbps

## System Support

OS

- Windows (Server 2008, Vista, Server 2003, XP, 2000), UNIX, Novell, Mac, DOS, OS/2, HP-UX, AIX, IBM OS/400, OS/390, z/OS, MVS, VM, VSE



## Protocols

■ SNA, TCP/IP, (PPD/PPR, Port 9100). Other protocols including HP proprietary protocols for printer setup and mfp functionality\*

\*) Transparent via switch

IBM Host system support

■ IBM zSeries, S/370, S/390 (MVS/VM/VSE), IBM AS/400, iSeries, i5

## Minimum System Requirements (IPDS)

- PSF/MVS Rel. 2.1 or higher
- PSF/VM Rel. 2.1 or higher
- PSF/VSE Rel. 2.2.0 or higher
- GDDM 3.1
- PSF/400 Rel. 3.1 or higher
- InfoPrint Manager for Windows Ver x.x
- InfoPrint Manager for AIX ver x.x

## Emulation

IPDS

■ IBM IP40\*, 4028 (3916/3912, 3116/3112), 3812, 3816

\*) Default emulation

SCS

■ 3270: 3287, 3268, 4214-1

■ 5250: 4234, 5224, 5225, 5256

DCA

■ 5250: 5219/3812

## Supported printers

- One PCL 5/5c/ and PostScript L2/L3 compatible printer.
- Network output port.

## Connections

- 2-port Ethernet switch:
  - Port 1: Network connection
  - Port 2: Output for printer NIC
- USB: Not used

## Features

- Multi session/multi protocol support
- Pre, post and replacement string facility
- Firmware upgrade via PrintGuide™

■ Password protected setup

IPDS features

■ Full IPDS support, Up to 55ppm (High Speed options available). Full colour printing incl FS45, JPG, JFIFF and Object Container support. 2D barcode printing, True-page counters, Double byte font (DBCS) support, Page offset functions. IBM IP40, 4028 & IBM 3812/3816 resident font sets. Downloadable IPDS font set. Outline font support, 240, 300 and 600 dpi support.

SCS/DCA features

■ MPI Tech FSL facility, Advanced font handling, Multiple page formats, Automatic page orientation, Advanced paper size handling, Internal barcode generation, MPI Tech PSS/EPM AFP software support

## Set-up

- MPI Tech PrintGuide™ (Windows)
- Web browser (HTML)
- Auto-configuration
- DHCP server
- TELNET

## Regulatory information

Safety

■ 73/23/EEC-Low voltage directive:

• EN60950-1:2001

■ UL60950-1 (CSA C22.2 No:60950-1-3)

EMC

■ 89/336/EEC - EMC directive:

• EN 55022: 1998 + A2:2003, Class B

• EN 55024: 1998 + A1:2001 + A2:2003

■ FCC 47 CFT Part 15, Class A

■ AS/NZS 3548 Class B

Environmental

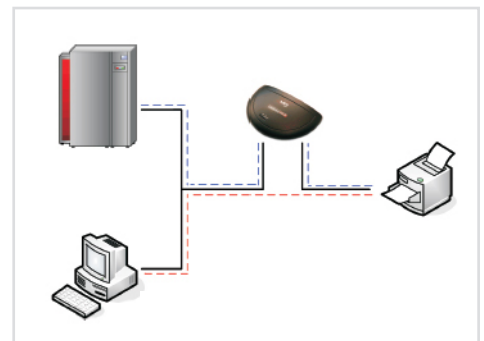
■ 2002/95/EC - RoHS directive

■ 2002/95/EC - RoHS directive

■ 2002/95/EC - RoHS directive

## Warranty

- 3 years manufacturing fault warranty



## Size / Weight

- 116 x 74 x 25mm / 4.6 x 2.9 x 1"
- Weight: 75g / 2.6oz / 0.2lb

## Power Requirements

- 12-18 VDC @ 700mA (Power supply incl.)

## About Fontware Ltd

Formed in 1987, Fontware Ltd is a UK based company supplying innovative corporate printing solutions.

Our world-class software & hardware products are used each day by thousands of customers in over 50 different countries.

**Our Comprehensive Offerings Include :**

Printing Solutions



Barcode Solutions



Managed Print Services



Professional Services



## Fontware Ltd

25 Barnes Wallis Road, Segensworth East, Fareham, Hampshire, PO15 5TT, UK.

Telephone: +44 (0)1489 505075 Fax: +44 (0)8700 515816 - www.fontware.com - sales@fontware.com

© Fontware 2011, All Rights Reserved

**Fontware™**  
REDEFINING PRINT